



# DDD Perth 1

**When:** 29<sup>th</sup> August 2015

**Where:** Burswood on Swan, 1 Camfield Drive Burswood

**Hashtag:** #dddperth

## Registration & Keynote

DDD Perth is being held at Burswood on Swan located near Crown Perth on the banks of the Swan River.

Registration is from **8:30 to 9:00am** in the Main Room.

**Note:** There is no need to print out your ticket. Please use the Eventbrite mobile app, show us the PDF ticket on your mobile device or just tell us your name.

## Code of Conduct

Please familiarise yourself with the [Conference Code of Conduct](#).

All attendees, speakers, sponsors and volunteers at our conference are required to agree with the code of conduct. Organisers will enforce this code throughout the event. We are expecting cooperation from all participants to help ensuring a safe environment for everybody.

## Getting There

### Public Transport

We recommend using [Google Maps](#) to determine the best public transport option for you.

Burswood on Swan is a 15 minute walk from the Great Eastern Highway bus stops for Crown Perth (#14451, #14453, #14506, #14504, #14509). The following bus routes go past the stops: 36, 37, 39, 40, 286, 287, 293, 295, 296, 29.

Timetables for these routes can be found on the [Transperth Website](#).

If you take the train take the Armadale/Thornlie line, getting off at Burswood station. Not all trains stop at this station. Catch a **T pattern** and check with the station information to ensure you catch the right one.

Expect a 15-20 minute walk to the venue from public transport stops.

[Armadale/Thornlie Line Timetable](#)

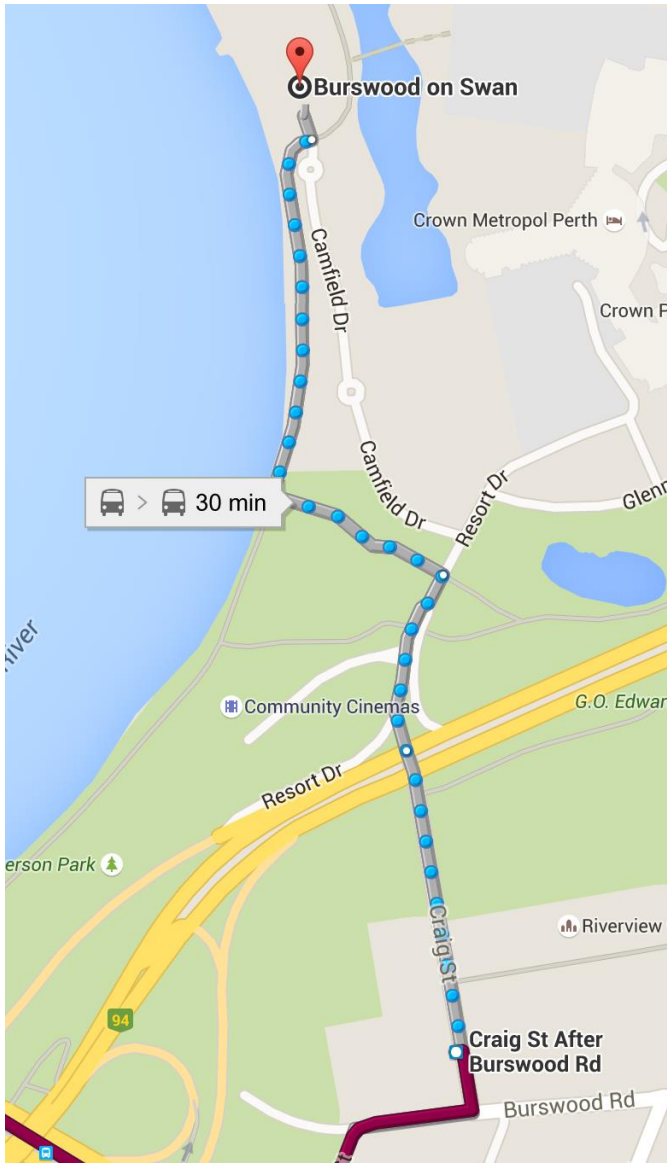


Figure 1 Walking route for number 37 and 40 buses

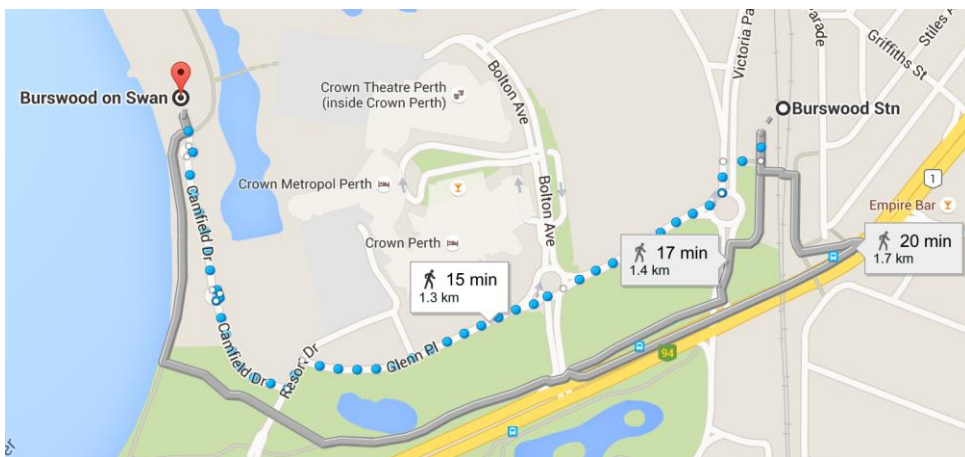


Figure 2 Walking routes from Burswood Station

## Driving

Burswood on Swan has ample free parking for all guests on site. There is also free public parking located along Camfield Drive patrons are also welcome to use.

There is a taxi rank at Crown Perth that is a 5 minute walk away as well.

## Picture Directions

### Bus Route 37

Coming from the city get the relevant stop is just after the bus turns off Burswood Road onto Craig Street. Look for this corner.



The relevant bus stop is #14509



Proceed north on Craig Street, past the Riverview church building



Cross at the lights. You'll want to do this from the left hand side of the road.



After crossing the road proceed down Resort Drive.



Turn left onto Camfield Drive

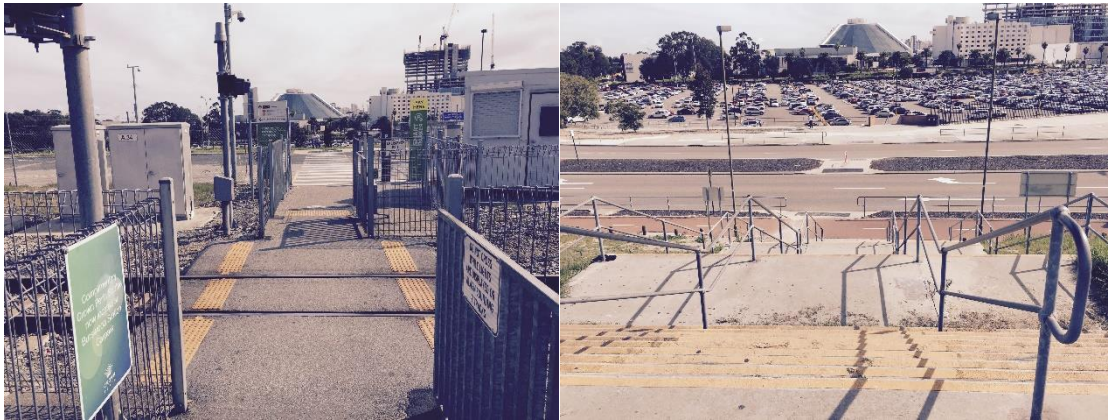


Follow Camfield Drive all the way to the venue at the end of the road.



## Train

Get off at Burswood Station on the Armadale/Thornlie line (T pattern only). Turn right when exiting the station and proceed down the stairs.



Cross Victoria Park Drive and turn left, following the path around the corner onto Glenn Place



At the roundabout follow the path around the right side and continue west along Glenn Place past the Crown carpark.



At the end of Glenn Place turn left onto Resort Drive then take the first right onto Camfield Drive (this picture is shown from the opposite direction)



Follow Camfield Drive all the way to the venue at the end of the road.



## Issues & Questions

On the day for any issues or questions please feel free to speak to a member of the DDD Perth team who will be easily identifiable by their green DDD Perth t-shirts and be happy to help you. We'll also be identifying the organisers during the welcome.

You can also send a tweet to @dddperth or email [info@dddperth.com](mailto:info@dddperth.com).

## Toilets

Looks for the signs on the day indicating the location of the toilets.



## Food and Drink

Morning Tea, Lunch and Afternoon Tea will be provided. Additionally tea and coffee will be available throughout the day.

## End of day

After the keynote please move promptly into the side room as the venue needs to prepare for another event. From 4:50pm to 7pm in the side room there will be food and a bar tab kindly provided by Bankwest.

At the end of the day please help us by assisting in returning the room to the way it was set-up and removing any rubbish such as coffee cups, paper, food scraps etc.

## After Party

After the event we invite you to join us at The Dutch Trading Company in Victoria Park. We will be gathered at 7:10 out the front of the venue and decided on transport depending on preferences and weather.

## WiFi

The venue does not have WiFi available for attendees.

## Tracks

DDD Perth consists of two tracks which will be run out of the Main Room and the Side Room. These will be clearly marked on the day. Tracks have no particular theme, attend whatever sessions most interest you.

## Agenda

We've integrated with [Lanyrd](#) for our session and speaker details. You'll be able to track sessions, speakers, [create your personal schedule](#) and find any follow up coverage.

Offline access to the Agenda is available through the Lanyrd app on the [App Store](#) and the [Google Play Store](#).

Easy sign in through Twitter, LinkedIn or username/password enables you to create your personal schedule for the day, meet other attendees and find out about other events you may find interesting.

You can still view event information even if you do not have a Twitter or LinkedIn account.

[View the DDD Perth agenda.](#)

## Our Sponsors

Thanks to all our sponsors as without them we would not be able to hold this event.

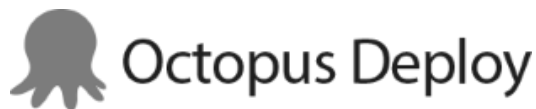
### Platinum Partner



### Gold Sponsors



### Silver Sponsors



### Standard Sponsors



# Varianto:25